



TRAVERSE CITY
LIGHT & POWER

EDITION
Nov/Dec 2025

NEWSLETTER

TIME OF USE RATES

Take effect in December 2025

Public Power

TCLP COLORING CONTEST

Winner announced Pg. 2



TCLPfiber
Your Community Network

TCLPfiber IS EXPANDING

Keep reading for an update inside.

Community Investment Fund ACCEPTING APPLICATIONS

November 1 - January 31, 2026
Learn more on pg. 2

PREPARE FOR TIME-OF-USE RATES: CHANNEL THE POWER OF POSITIVE ENERGY

Starting December 2025 (with the change reflected on your January 2026 bill), TCLP will transition from a traditional flat rate to Time-of-Use (TOU) rates. This change means the cost of your electricity will depend on when you use it: Rates will be higher during on-peak hours (times of high demand) and lower during off-peak hours, including all weekends and federally recognized holidays.

This shift is designed to align customer costs with the utility's actual expense to produce power, promoting fairness and efficiency. More importantly, it supports a stronger, more reliable grid and directly contributes to the utility's decarbonization efforts by encouraging energy conservation and a necessary shift away from using high-cost, fossil fuel-based energy during peak times. This change ultimately gives you more control over your monthly bill by shifting energy use to lower-cost, off-peak periods.

Rate Options

To give you maximum flexibility and control during this transition, TCLP is offering two main rate options: Eco Champion and Eco Steady.

Additionally, you can choose to ease into the new structure gradually with the Phase-In option, which spreads the change over four years, or move directly to the full rate with the Non-Phase-In option. If you do not make a selection, you will be automatically enrolled in the Eco Steady, Phase-In option as of December 2025, which is designed to have the least initial impact on your bill. However, customers participating in our Customer Generation Program (net metering/billing) will be automatically migrated to Eco Champion, Non-Phase-In.

We encourage every customer to review the details and on-peak hours for both rates at tclp.org/time-of-use to select the option that best fits their energy habits. Contact us at customerservice@tclp.org or at 231-922-4940 with questions.

TCLP COMMUNITY INVESTMENT FUND AWARDS \$55,000 TO LOCAL ORGANIZATIONS



TCLP is proud to announce the latest recipients of funding through its Community Investment Fund, which supports projects that strengthen and empower our community.

TCLP granted \$50,000 to the Women's Resource Center for energy-efficient apartment renovations and \$5,000 to the NMC Foundation for LED upgrades at the Dennon Museum.

Accepting Applications Now!

The Community Investment Fund (CIF) assists non-profit organizations, focusing on three key areas: Clean Energy Related Programs and Projects, Innovative Clean Energy Technology, and Natural Resources/Environmental Programs.

Grant applications are accepted two times per year, from the period of May 1 – July 31 and from November 1 – January 31.

Scan the QR code to learn more.



CONGRATULATIONS TO OUR PUBLIC POWER COLORING CONTEST WINNER!



A big congratulations to Miles, the winner of TCLP's Public Power Coloring Contest for 1st–3rd graders! Thank you to all the young artists who submitted their colorful and creative entries, we loved seeing your work!

IN THE HEART OF THE SEASON, A MESSAGE FROM BRANDIE

Brandie Ekren, Executive Director

Fall reminds us that change is natural — and at Traverse City Light & Power, change means progress. From new TCLPfiber internet and phone services to Time-of-Use rates that give you more control over your energy use, we're building a stronger, more connected community.

We know learning new systems takes time. Our team is here to support you every step of the way — no penalties, just partnership.

You've likely noticed more construction activity as we expand our fiber backbone across the city. We appreciate your patience during this work and as we plan for upcoming restoration of road rights-of-way and lawns. Pardon our mud — it's progress in motion.

With appreciation,
Brandie Ekren

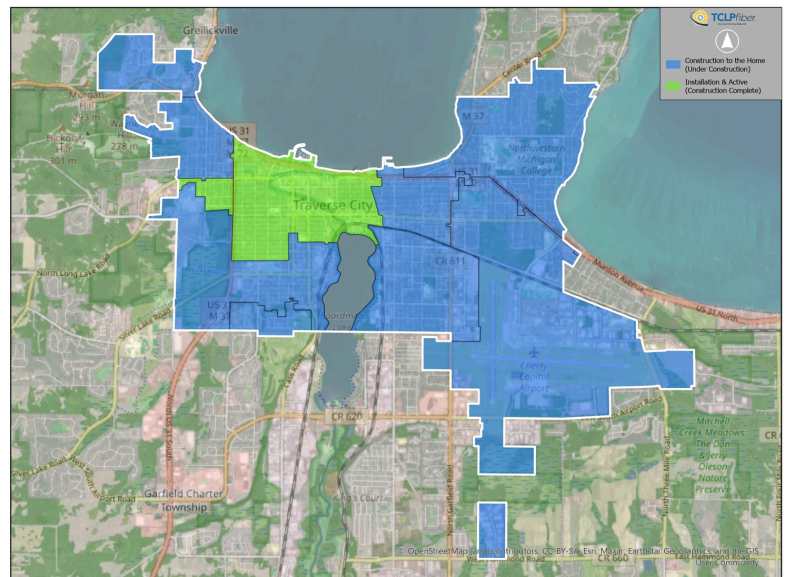


TCLPfiber EXPANDS SERVICE AVAILABILITY!

TCLPfiber is growing! Postcards have been sent to customers in areas where fiber installation is now available.

If you received a postcard, you can sign up today at tclp.org under TCLPfiber. Sign up or call our customer service department at 231.922.4940.

You can also check your address on our Availability Status page, which includes a map updated whenever new zones are added. On the map, green areas indicate where installation is available, and blue areas show zones under construction.





CHANNEL THE POWER OF

POSITIVE ENERGY

WITH TIME-OF-USE RATES



REMINDER: Time-of-Use Rates Start Next Month

Starting in December 2025 (appearing on your January 2026 bill), TCLP will be shifting from a flat per-kWh charge to Time-of-Use rates.

If you haven't made a selection, this is the time to choose the rate that suits you the most. Your energy costs will soon depend entirely on when you use power.

Which Rate Best Fits You?

You can choose to ease into the new rates with the Phase-In option, which spreads the transition over four years, or you can go directly to the new rate structure with the Non-Phase-In option.

There are also two on- and off-peak hour options:
Eco Steady and Eco Champion.

REMEMBER: Winter On-Peak Hours (Oct. 1 to May 31) are currently Monday through Friday, 8 a.m. to 8 p.m.

Customers who haven't selected a rate will automatically be moved to Eco Steady, Phase-In as of December 2025.

Those on net metering/billing (Customer Generation Program) will be migrated to Eco Champion, Non-Phase-In.



To learn more about the different rates, visit tclp.org/time-of-use or scan the QR code.

Contact us at customerservice@tclp.org or 231-922-4940 with questions.

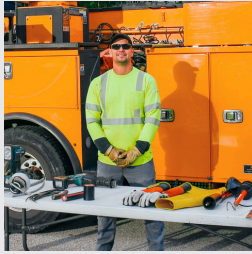
POWERING OUR COMMUNITY: PUBLIC POWER & CAREERS IN ENERGY WEEK EVENTS



During Careers in Energy Week (Oct. 20–24), TCLP's Engineering and Line Departments visited classes at Northwest Education Center."



During Public Power Week (Oct. 5–11), TCLP visited 2nd graders at Willow Hill Elementary to teach electric safety and sustainability."



UPCOMING HOLIDAY CLOSURES

Thanksgiving:

Thursday, November 27th
Friday, November 28th

Christmas:

Wednesday, December 24th
Thursday, December 25th

New Year's

Thursday, January 1st



TRAVERSE CITY
LIGHT & POWER



TCLPfiber
Your Community Network

1131 Hastings St. | Traverse City, MI 49686
130 Hall St. | Traverse City, MI 49684
Outages and 24-Hour Service: 231.922.4940
TCLPfiber Service and Sign-Up: 231.922.4940
Billing and Accounting Questions: 231.922.4940
Website: www.tclp.org



PROUDLY SERVING OUR COMMUNITY
FOR 113 YEARS!

GET EXPERT GUIDANCE WITH TCLP'S FREE ENERGY COACHING PROGRAM

As energy technology evolves and new rate structures like Time of Use (TOU) rates take shape, many homeowners are looking for guidance on how to make the most of these changes. That's where the **Energy Coaching program** comes in.

The program begins with a free home energy assessment designed to identify opportunities for upgrades, efficiency improvements, and areas of concern. From there, your Energy Coach provides a personalized report that highlights specific recommendations, connects you with available utility and state incentives, and even helps you find qualified contractors. Most importantly, your Energy Coach remains a trusted point of contact as you navigate your home energy projects, from first steps to completion.

With TOU rates encouraging smarter energy use, your Energy Coach can help you plan improvements that take advantage of lower-cost, lower-carbon hours of the day. Whether it's upgrading to a heat pump, optimizing your appliance use, or exploring on-site generation options, Energy Coaching can help you save energy, lower costs, and shrink your carbon footprint.

**Scan to sign up for your free
energy coaching session today!**

Contact: Colin Hites
Sustainability & Climate Initiative Analyst
chites@tclp.org | 231.932.4567



IMPROVING OUR COMMUNITY, ONE PROJECT AT A TIME

Three Mile & US-31 Project:

TCLP has completed upgrades at the Three Mile and US-31 intersection with MDOT's road widening project. Overhead lines were moved underground to improve reliability and reduce outage risks for nearby customers.

Cypress Street Project:

TCLP is rebuilding and upgrading parts of the electric system in the Avenue B, Avenue E, and Indian Trail Blvd area to strengthen reliability for East Bay Township customers.

Residents may notice equipment and brief outages during construction. TCLP will notify affected customers ahead of any planned service interruptions.

If you have any questions about this project, contact Jonah Flange at 231.932.4569